



# SEPTEMBER 2025 THE SITUATION REPORT

*The Official Newsletter of  
Greenville County Emergency  
Management*



**SUBSCRIBE**  
TO OUR  
NEWSLETTERS

FOLLOW US



**YOU'RE INVITED TO ATTEND**

# **GET READY GREENVILLE**

A *FREE* EMERGENCY PREPAREDNESS EVENT



**SATURDAY,  
SEPTEMBER 13, 2025  
10:00 AM - 1:00 PM**

**225 S. PLEASANTBURG DR.  
GREENVILLE, SC 29607**

- Giveaways
- Kids' Activities
- Food Vendors:
  - One Armed Smoker
  - Kona Ice
- Touch-a-truck or Police Vehicle
- Meet First Responders, Public Safety & Marty the Mitigation Moose

**SEPTEMBER IS NATIONAL PREPAREDNESS MONTH**



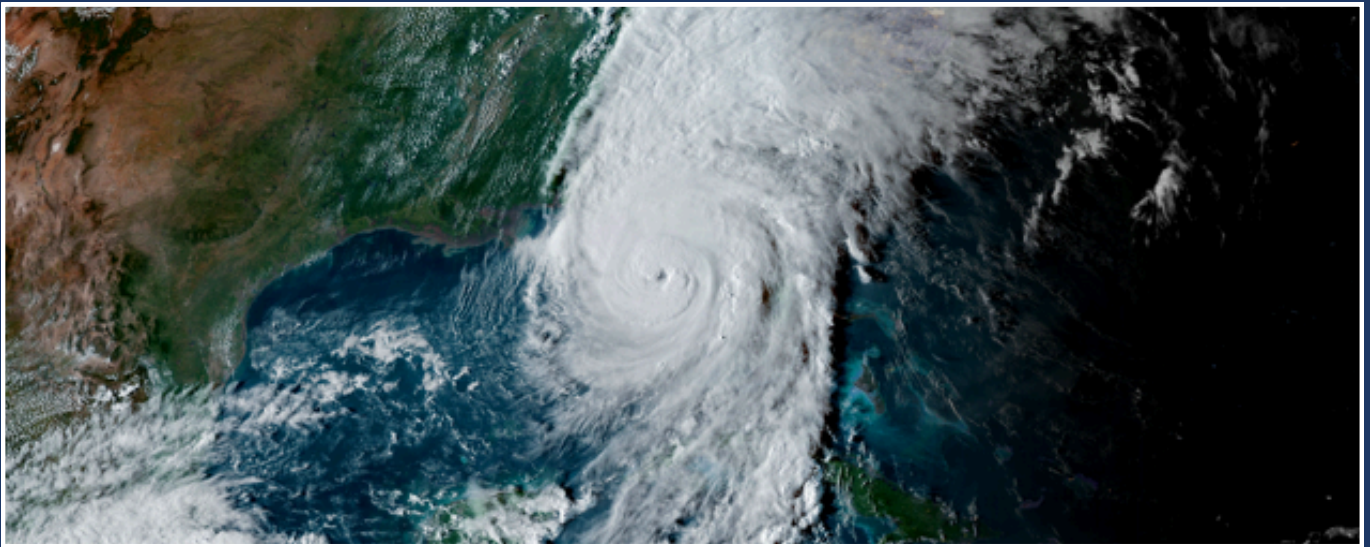
# CONGRATULATIONS ON YOUR PROMOTION TO INTEROPERABILITY TECHNOLOGY MANAGER!



**BEN MCELROY**

Since joining Greenville County Emergency Management, Ben has consistently shown outstanding leadership, dedication, and a commitment to excellence. We know he will bring the same energy, vision, and teamwork to this new role. Please join us in congratulating Ben on this well-deserved achievement!





# STRONGER AFTER THE STORM

## *Greenville County Reflects on One-Year Helene Anniversary*

It has been one year since Hurricane Helene—a formidable Category 4 storm—made landfall in Florida’s Big Bend region before moving northward as a tropical storm, cutting a devastating path through the Southeast and reaching deep into Upstate South Carolina. In its wake, Helene left a trail of destruction marked by torrential rainfall, high winds, extensive flooding, and widespread damage.

Greenville County was hit particularly hard. The storm dropped over 12 inches of rain, triggering flash floods and damaged more than 300 homes, closed numerous roads, and overwhelmed local drainage infrastructure. Thousands of trees were uprooted across the region, blocking roadways, damaging property, and delaying emergency response efforts. Widespread power outages and communication disruptions further compounded the challenges. Greenville County Schools were closed for eight instructional days, with neither in-person nor remote learning options available. The storm’s impact extended beyond physical damage—families, neighborhoods, and institutions faced a profound emotional toll marked by loss, uncertainty, and disruption.

Many describe the storm as a defining moment—one which tested our community’s limit but also revealed it’s strength. Neighbors helped neighbors





clear debris. Churches and schools opened their doors to shelter displaced families. Emergency crews worked around the clock under extreme conditions. As the anniversary of Helene approaches, Greenville County continues to recover and rebuild stronger and smarter. Significant progress has been made over the past year:

- **Debris Removal:** Crews have removed more than 2 million cubic yards of storm debris in Greenville County—a testament to both the storm’s intensity and our commitment to restoration.





- **Housing Assistance:** More than \$4.2 million in federal and state aid has been distributed to support home repairs and provide temporary housing for affected residents.



- **Infrastructure Improvements:** County engineers have upgraded culverts and drainage systems in several flood-prone areas, with additional infrastructure projects currently underway.





- **Community Support Services:** Through partnerships with local organizations, more than 1,000 residents have received mental health support, case management, and financial counseling. The county has also established its first Long-Term Recovery Group to coordinate ongoing efforts and address unmet needs.



- **Preparedness and Resiliency Education:** Emergency Management has expanded its public outreach through the “Get Ready Greenville” initiative and is collaborating with nonprofit partners on long-term strategies such as the Resilient Food Systems Plan. These efforts aim to empower residents with knowledge and resources to better withstand future disasters.

While recovery is ongoing, Greenville County Emergency Management remains steadfast in its mission to strengthen emergency systems through innovation, training, and public education. As we mark the anniversary of this historic event, we recognize the strength and resilience of our community, commend the dedication of our first responders, and celebrate the collective efforts shaping a stronger, more prepared Greenville County. Together, we honor the past, support the present, and build toward a safer, more resilient future.



# GREENVILLE COUNTY PROCLAIMS AUGUST 2025 AS EMERGENCY MANAGEMENT AWARENESS MONTH



Greenville County Council has officially recognized August 2025 as *Emergency Management Awareness Month* for Greenville County, issuing a proclamation to highlight the critical role of emergency preparedness in keeping our community safe.

The proclamation, presented during the August County Council meeting, honors the ongoing efforts of Greenville County Emergency Management during Hurricane Helene and the Table Rock Complex Fire, to prepare, protect, and support residents before, during, and after emergencies. The recognition underscores the county's commitment to fostering resilience through planning, partnerships, and public education.

This recognition aligns with the International Association of Emergency Managers (IAEM)'s nationwide campaign to raise awareness about the critical work emergency managers perform every day. Governor Henry McMaster also issued a statewide proclamation recognizing August as Emergency Management Awareness Month in South Carolina.

Together, with the support of IAEM, Governor McMaster, and Greenville County Council, we are building a stronger, more resilient Greenville County.







SEPTEMBER IS

# National Preparedness Month

PREPAREDNESS  
STARTS AT HOME



This year's National Preparedness Month theme is **Preparedness Starts at Home**. We are asking people to take four key actions to prepare for any disaster they may face:



**Know the different types of emergencies that could happen and appropriate responses to stay safe.**



**Make a family emergency plan.**



**Build an emergency supply kit.**

**ACT NOW**



**Get involved in their community by taking action to prepare for emergencies.**



# NATIONAL CERT WEEK 2025



The National CERT Association (NCA) has proclaimed the week of September 14-20, 2025, as **National CERT Week**, a time to honor the everyday heroes who make our communities safer, stronger, and more prepared. This year's theme, "Every Community Needs a **CERT**ain Kind of Hero," shines a spotlight on the unique and vital role CERT volunteers play across the country.

CERT members are trained volunteers—ordinary citizens with extraordinary dedication—who assist during emergencies and support their communities year-round.

Whether it's responding to natural disasters, helping manage large public events, or educating neighbors on preparedness, CERT volunteers step up when it matters most. They may not wear capes, but they do carry first aid kits, radios, and a strong sense of duty.



## How you can get involved:

- ✓ Take the Training: Many CERT programs offer free training in disaster response, to include Light Search and Rescue, Light Fire Suppression, First Aid, Disaster Psychology, and much more.
- ✓ Apply to be a part of the Advanced CERT program in Greenville County. To start your journey, visit [www.GCEOC.com/Teams/CERT](http://www.GCEOC.com/Teams/CERT). Classes are forming now!
- ✓ Be the **HERO** your community can count on, because every neighborhood, every town, every community needs a **CERT**ain kind of hero.





# Generator Safety

Downed utility lines, power company blackouts, heavy snow falls or summer storms can all lead to power outages. Portable generators are a temporary solution to power appliances. It's important to know that portable generators emit carbon monoxide (CO), a poisonous, deadly gas. Use these tips to avoid CO exposure:

- Use portable generators outdoors in well-ventilated areas at least 20 feet (7 metres) from all doors, windows, and vent openings. Measure the 20-foot (7 metre) distance from the generator to the building.
- Never use a generator in an attached garage, even with the door open.
- Place generators so that exhaust fumes can't enter the home through windows, doors or other openings in the building. The exhaust must be directed away from the building.
- Make sure to install carbon monoxide (CO) alarms in your home. Follow manufacturer's instructions for correct placement and mounting height.
- Turn off generators and let them cool down before refueling. Never refuel a generator while it is hot.



- Store fuel for the generator in a container that is intended for the purpose and is correctly labeled as such. Store the containers outside of living areas.

## Just Remember...

When plugging in appliances, make sure they are plugged directly into the generator or a heavy duty outdoor-rated extension cord. The cords should be checked for cuts, tears and that the plug has all three prongs, especially a grounding pin.

If you must connect the generator to the house wiring to power appliances, have a qualified electrician install a properly rated transfer switch in accordance with the National Electrical Code® (NEC) and all applicable state and local electrical codes.

## FACT

- ! Portable generator exhaust is toxic and deadly. Do not stand or sit downwind of generator exhaust. If you can smell exhaust, you are inhaling it.



**NATIONAL FIRE PROTECTION ASSOCIATION**  
The leading information and knowledge resource on fire, electrical and related hazards



# TRAINING SPOTLIGHT

**Course Name:** Intermediate EOC Functions (G2300)

**When:** September 16-18, 2025

**Time:** 9:00 am - 4:30 pm

**Location:** Anderson County EOC - 200 Bleckley St. Anderson, SC 29625

[LMS Link](#)

**Course Name:** Emergency Planning

**When:** September 17-18, 2025

**Time:** 8:00 am - 4:00 pm

**Location:** Aiken Department of Public Safety - 834 Beaufort St. NE, Aiken, SC 29801

[LMS Link](#)

**Course Name:** Working with the Media: A Course for Rural First Responders (AWR 209)

**When:** October 15, 2025

**Time:** 8:00 am - 5:00 pm

**Location:** SC Rural Water Association - Training Room - 128 Stonemark Lane, Columbia, SC 29210

[LMS Link](#)



Need to register for a training?

Greenville County Emergency Management Training: [Training & Exercises Calendar](#)  
South Carolina Emergency Management Division Training: [Training Registration System](#).